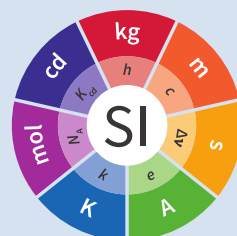


Outline of JCTLM Procedures for evaluating Certified Reference Materials Reference Measurement Methods/ Procedures



Copyright statement

This document is distributed under the terms of the Creative Commons Attribution 4.0 International License (<http://creativecommons.org/licenses/by/4.0/>), which permits unrestricted use, distribution, and reproduction in any medium, provided you give appropriate credit to the original author(s) and the source, provide a link to the Creative Commons license, and indicate if changes were made.

Outline of JCTLM Procedures for evaluating Certified Reference Materials and Reference Measurement Methods/Procedures to be listed as being of a higher metrological order

Contents

1. Purpose	7
2. Scope	8
3. Acronyms and definitions	9
4. Procedures	10
5. Revision History	11

Appendix 1. Flowchart

12

1. Purpose

This outline provides an overview of the process by which the JCTLM Database working group (DB WG) and its review teams make recommendations for listing reference materials

2. Scope

The processes outlined in this document apply to all Certified Reference Materials (CRMs) and Reference Measurement Methods/Procedures (RMM/Ps) nominated for inclusion by the JCTLM in its lists of available higher-order materials and procedures.

3. Acronyms and definitions

All acronyms and definitions employed in the procedures of the JCTLM DB WG Quality Manual are given in the procedure document JCTLM EXE-G01, Glossary of terms and definitions.

4. Procedures

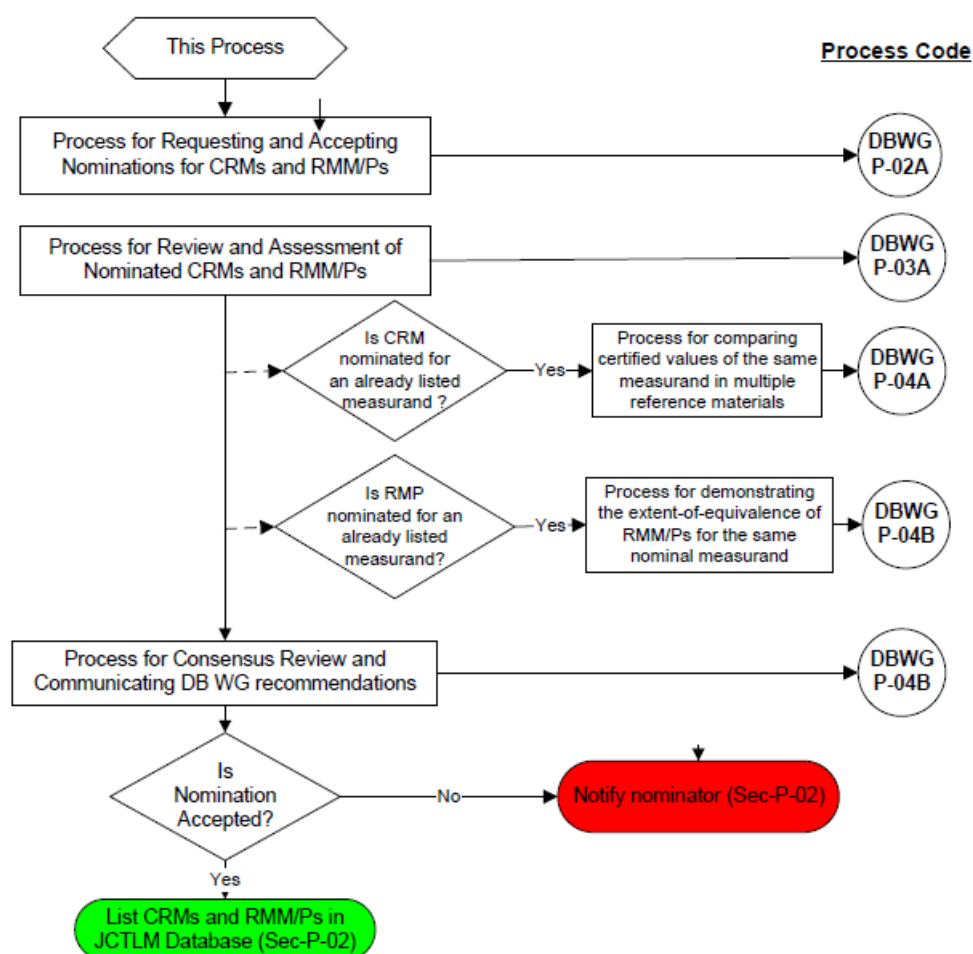
The procedure for the evaluation of materials and procedures to be listed by the JCTLM as being of a higher metrological order is segmented into three processes. The details of each process are presented in the individual procedures of the JCTLM DB WG Quality Manual. The attached flowchart indicates how the detailed processes are interconnected. The procedure by which the JCTLM DB WG communicates and is managed is indicated in this attached flowchart.

5. Revision History

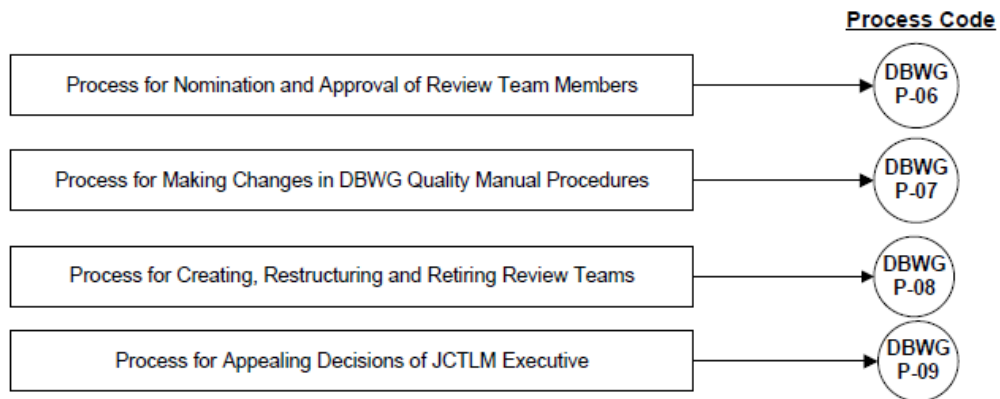
Version number	Date of Issue/Review	Summary of change
1.0	01/08/2004	Initial issue of WG1 Quality System Procedures
2.0	10/15/2005	Separation of procedures into reviewing and management groups, revision of titles for some procedures to more accurately reflect the procedure content
2.1	12/01/2006	Correction of Minor Textual errors
3.0	27/01/2017	Document revised after implementation of new organizational structure of JCTLM and its Working Groups
3.1	01/02/2019	Update of hyperlinks

Appendix 1. Flowchart

Outline of JCTLM DB WG processes for identifying and listing Certified Reference Materials (CRMs) and Reference Measurement Methods/Procedures (RMM/Ps) as being of higher metrological order DB WG-P-01A (January 2017)



DB WG Review Process for Materials and Methods



DB WG Management Procedures



